

Material of the rhopalid genera *Leptocoris* Hahn, 1833, and *Boisea* Kirkaldy, 1910 (Heteroptera) from the collection of the Nationaal Natuurhistorisch Museum at Leiden, The Netherlands

U. Göllner-Scheiding

Göllner-Scheiding, U. Material of the rhopalid genera *Leptocoris* Hahn, 1833, and *Boisea* Kirkaldy, 1910 (Heteroptera) from the collection of the Nationaal Natuurhistorisch Museum at Leiden, The Netherlands.

Zool. Med. Leiden 66 (14), 31.vii. 1992: 277-282, figs 1-2.— ISSN 0024-0672.

Key words: Heteroptera; Rhopalidae; *Leptocoris* Hahn, 1833; *Boisea* Kirkaldy, 1910; Regions: Indo-Australian, Afrotropical; taxonomy.

Indo-Australian and Afrotropical material of the rhopalid genera *Leptocoris* Hahn, 1833, and *Boisea* Kirkaldy, 1910 of the Nationaal Natuurhistorisch Museum at Leiden has been listed, *Leptocoris fusca* spec. nov. from Timor (Indonesia) is described, and its male genital characters are figured.

U. Göllner-Scheiding, Museum für Naturkunde der Humboldt-Universität, Invalidenstrasse 43, Berlin, O - 1040, Germany.

Introduction

A fairly extensive collection of *Leptocoris* Hahn, 1833, and some specimens of *Boisea* Kirkaldy, 1910, from the Indo-Australian and Afrotropical regions were kindly placed at the author's disposal for identification.

Ten Indo-Australian and eight Afrotropical species were found. The localities of the specimens collected agree in most cases with the known distribution of the species involved; only in a few cases an extension of the known distribution could be established. One new species, *Leptocoris fusca*, is described from Timor (Indonesia).

List of species and subspecies

Indo-Australian Region (Subregions included)

Leptocoris Hahn, 1833

Leptocoris abdominalis abdominalis (Fabricius, 1803)

Material.— India: 1 ♂, Madras State, Anamalai Hills, Kadamparai, 1150 m, v.1963, 3 ♀♀, Anamalai Hills, Cinchona, 1150 m, v.1964, 1 ♀, Nilgiri Hills, Devala, 1050 m, v.1961, P. Susai Nathan. Vietnam (Cochin China): 1 ♀, Annam, Prov. de Vins, Thado par Cuaras, 400 m, iii-iv.1913, 1 ♀, Annam, Phui Son, 1 ♀, Tonkin, Hao Kay, 1 ♀, Saigon, 4.vii.1924, 6 ♂♂, 4 ♀♀, Thayninh, xi-xii.1924, E. le Moul't; 1 ♂, Thayninh, 17.x.1929, R. Vitalis de Salvaza (from E. le Moul't). Malaysia: 1 ♂, Malaya, Perlis, Kangar, 31.v.1974, P. Roche; 1 ♀, Borneo, Sabah, 24km on rd Keningau-Kimanis (N-side), 1350 m, 116°03' E, 5°27' N, 19.xi.1987, at light, J. Huisman & R. de Jong. Indonesia: 1 ♀, Sumatra, Medan, iv.1929, 8 ♂♂, 12 ♀♀, Soembawa (Sumbawa), Bima, E. le Moul't; 1 ♀, Celebes (Sulawesi), Lombosang, v.1921; 1 ♂, Minahassa, P.J. v. d. Bergh; 1 ♂, 1 ♀, Sulawesi, M. Ambang NR, 20 km E of Kotamobagu, ±1000 m, 28-29.v.1985, J. Huijbregts.

Distribution.— SE Asia, Philippines, Indonesia.

Leptocoris abdominalis taprobanensis (Dallas, 1852)

Material.— **India:** 1 ♀, Anamalai Hills, Cinchona, 1150 m, v.1962, 1 ♂, Madras State, Anamalai Hills, Kadamparai, 1150 m, v.1963, 2 ♂♂, 2 ♀♀, Madras State, 1050 m, ix.1960, 4 ♂♂, 3 ♀♀, Devala, 1050 m, ix.1960, v.1961, P. Susai Nathan.

Remark.— This is a small series from South India which I considered at first to belong to a new species because of its aberrant yellowish appearance while the nominotypical subspecies is reddish. However, after renewed examination I decided that it belongs to the western yellow subspecies *Leptocoris abdominalis taprobanensis* (Dallas, 1852). All specimens were collected at moderate high altitudes (1050 -1150 m) and are somewhat smaller, the pronotum narrower and less convex, and the lateral parts of the posterior margin of the male pygophore somewhat more receding than in the nominotypical subspecies.

Distribution.— India, Sri Lanka, Socotra.

Leptocoris augur (Fabricius, 1781)

Material.— **India:** many specimens, Pondicherry State, Karikal, i.1960, vii.1968, 6 ♂♂, 6 ♀♀, Madras State, Coimbatore, 460 m, v, vi, ix+xii.1960, iii.1961, iv.1962, 1 ♂, Madras, x.1960, 1 ♂, 5 ♀, Kerala State, Walayar Forests, 230 m, x.1959, 8 ♂♂, 3 ♀♀, Anamalai Hills, Cinchona, 1150 m, iv-v.1960, iv.1962, v.1965, 2 ♂♂, Maravakkadu, v.1962, 1 ♂, Thambikotai, vi.1962, P. Susai Nathan. **Thailand:** 1 ♂, 1 ♀, Chiang Mai, 5-9.xii.1957, L.D. Brongersma; **Vietnam:** 1 ♂, Annam, Prov. de Vins, Thado par Cuaras, 400 m, iii-iv.1913, 1 ♀, Prov. Laos, Mg. Xei, E. le Moul.

Distribution.— SE Asia, Indonesia, Arabia, Mauritius.

Leptocoris dispar (Hsiao, 1963)

Material.— **India:** 1 ♀, Anamalai Hills, 1150 m, v.1962, E. le Moul. **Cambodia (Kampuchea):** many specimens, Angkor Wat, 6.v.1969, E.M. Scatton. **Vietnam:** 1 ♂, Tayninck, x.1923, E. le Moul.

Distribution.— India, China, Kampuchea, Tonkin.

Leptocoris insularis Kirkaldy, 1908

Material.— **Samoa Isles:** many specimens, Nmafou, iii.1955, Thumas.

Distribution.— Fiji, Samoa.

Leptocoris isolata isolata (Distant, 1914)

Material.— **Indonesia:** 1 ♀, Java, 21.xii.1924, L.G.E. Kalshoven; 1 ♀, Soemba (Sumba), Kambara, iii.1925, K.W. Dammerman.

Remark.— Up till now, the species *Leptocoris isolata* was not mentioned from Java or Sumba; unfortunately, the studied specimens are all females of which the identifi-

cation always remains somewhat uncertain.

Distribution.— Indonesia to Oceania.

Leptocoris rufomarginata (Fabricius, 1794)

Material.— Laos: 1 ♀, Laos, Vitalis de Salvaza. Cochin-China/ Indo-China (Vietnam): 5 ♂♂, Tayninh, xii.1924, 1 ♂, 2 ♀, Poulocondore, viii.1924, E. le Moul; 1 ♂, 1 ♀, Tonkin, Laska Ht., vii.1913, 1 ♂, Vitalis (from E. le Moul). Malaysia: 1 ♂, Malaya, Selangor, Frasers Hill, 2700 m, 20.v.1974, 2 ♀♀, Perlis Kangar, 30-31.v.1974, P. Roche; 1 ♀, Borneo, Sabah, 16 km NE Tenom, Agr. Res. Stat., 270 m, 115°59' E, 5°12' N, 22.xi.1987, J. Huisman & R. de Jong. Indonesia: 4 ♂♂, 6 ♀♀, Riouw Arch., Doerian 39, xi.1923, K.W. Dammerman; Java: G. Malang, i.1940, Oeke; Many specimens, Soekaboemi, ii.1926, 1 ♂, Soekaboemi, 1 ♀, Java, 1 ♂, 6 ♀♀, Soembawa (Sumbawa), Bima, E. le Moul; 1 ♂, Celebes (Sulawesi), xii.1936, J. v.d. Vecht; 1 ♀, New Guinea (Neth. New Guinea Exped.), Star Range, Bivak 36, 1220 m, 29.vii.1959, 2 ♀♀, Star Range, Sibil, 1260 m, 4.vii.1959; 3 ♀♀, Sibil, on light, 28.iv. & 7.v.1959, C. van Heijningen.

Distribution.— SE Asia, Kalimantan, Philippines, New-Guinea, Australia, Oceania.

Leptocoris tagalica Burmeister, 1834

Material.— Indonesia: 3 ♀♀, C Java, Telawa, Nr. 2039, 9.iii.1932, 26.ii.1936, L.G.E. Kalshoven; 9 ♂♂, 10 ♀♀, (Pulau) Sepanjang, 1 ♀, Timor, Soeai, E. le Moul; 1 ♂, Soemba (Sumba), Kananggar, 700 m, v.1925, K.W. Dammerman.

Remark.— The mentioned localities represent new records of which Java is now the most western known.

Distribution.— Indonesia, Philippines, Australia, Oceania.

Leptocoris vicina (Dallas, 1852)

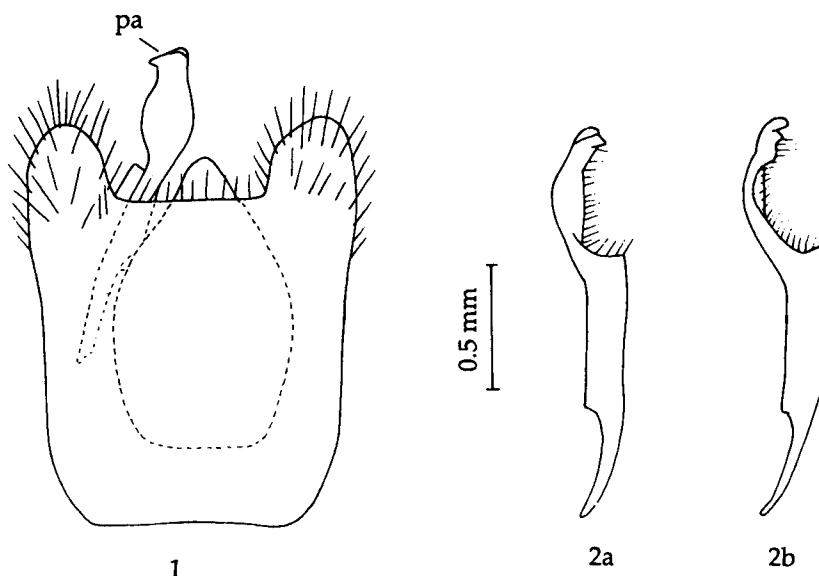
Material.— India: 1 ♀, Madras State, Coimbatore, v.1960, P. Susai Nathan. Indonesia: Java: 2 ♂♂, 1 ♀, Rembang, Tjepoe, 1.viii.1925, F.A.Th.H. Verbeek; 1 ♂, Buitenzorg (Bogor), 30.ix.1920; 1 ♀, Tjiomas, Buitenzorg, 3.vii.1937, J. v.d. Vecht; 1 ♂, Soekaboemi, E. le Moul; 1 ♀, Penandjoeng Bay (W-Java), vii.1936, M.A. Lieftinck; 1 ♀, Depok nr. Batavia (Jakarta), v-vi.1932, W.C. van Heurn; Soemba (Sumba): 2 ♀♀, Kambara, iii.1925, ?Dammerman.

Distribution.— SE Asia, Philippines, Oceania.

Leptocoris fusca spec. nov.

Material.— Holotype, ♂, 14 ♂♂, 5 ♀♀. Paratypes, Central Timor, Soeai, iii.1929, E. le Moul, in Museum Leiden; 1 ♂, 1 ♀. Paratypes with the same data as the holotype in Museum Berlin. Two other specimens, one ♂ and one ♀, not included in the type series, are from Lombok: Rin(d)jani, Segara Anak, 2000 m, ix.1936, R. v. d. Veen.

This species is near to *Leptocoris rufomarginata*, but its larger size, slender appearance, dark brown colour with yellowish head-, pronotal- and costal borders, and the adpressed light tomentum provide good distinguishing characters.



Figs. 1-2, *Leptocoris fusca* spec. nov. 1, pygophore (pa = paramere); 2a, 2b, parameres in different positions.

Description.— Head brownish, mostly dark brown, with broad, yellowish lateral borders, apex of head rather broad, yellowish; eyes reddish, somewhat surpassing the pronotum laterally; rostrum somewhat surpassing the hind coxae, antennae and rostrum dark brown. Pronotum only gently convex, dark brown with rather broad, yellowish lateral borders, anterior- and posterior margins only narrowly yellowish, anterior margin with a small lateral spine at each side, lateral margin usually straight, rarely somewhat convex, and obliquely running backward, posterior angles slightly rounded, densely punctate and somewhat wrinkled, set with short, adpressed light pile; median line only slightly raised, hardly visible; hemelytrae dark brown with yellowish lateral (= costal!) borders, apically tapering; set with fine, white, adpressed tomentum; membrane surpassing end of abdomen; legs dark brown, with fine, light pile; ventral side, coxae and trochanters yellowish-orange; under side of thoracic segments each with a rather large, dark median spot.

Measurements.— length: 13.1 - 15.7 mm (♂♂); 16.2 - 18.5 mm (♀♀)

width: 3.7 - 4.5 mm (♂♂); 4.5 - 5.5 mm (♀♀)

Genitalia.— Ventral posterior edge of the male pygophore (fig. 1) on each side with a rather broad, rounded, posteriorly directed projection bearing longer pile; parameres apically obliquely truncate; extracted parameres (figs. 2a and 2b) with a small head, provided with a small, lateral projection ('nose') and a somewhat fold-down apex. First valvulae of the female apically rather sharply pointed; second valvulae apically rounded and set with long, dense hair.

Distribution.— The species is only known from the intermediate area between the Oriental and Australian regions: Timor and most likely also Lombok.

Boisea (Kirkaldy, 1910)**Boisea coimbatorensis** (Gross, 1960).

Material.— **India:** 1 ♂, 1 ♀, Madras State, Anamalai Hills, Kadamparai, 1150 m, v.1963, 2 ♂♂, Anamalai Hills, Cinchona, 1150 m, iv-v.1960, 1 ♂, Maravakkadu, v.1962, P. Susai Nathan.

Distribution.— India.

Afrotropical region

Leptocoris Hahn, 1833**Leptocoris aethiops** (Distant, 1901)

Material.— **Liberia:** 1 ♂, 9 ♀♀, 40 km N v. Buchanan, iii.1964; 1 ♀, 40 km N v. Lower Buchanan, 1868, H.G. van Brinck. **Ghana:** 1 ♀, Foso, 6.v.1972, at light, M.S. Hoogmoed.

Distribution.— West and Central Africa.

Leptocoris alboisolata (Bergroth, 1912)

Material.— **Madagascar:** 1 ♂, Bosch Sianaka, xii.1925, E. le Moul.

Distribution.— Madagascar.

Leptocoris amicta amicta Germar, 1837

Material.— **Tanzania:** 1 ♂, Sibweza, Mpanda, v.1973, J. Kielland.

Distribution.— Central and South Africa.

Leptocoris griseiventris (Westwood, 1842)

Material.— **Nigeria:** 1 ♂, Wesmerrett, 6065; **Cameroon:** 1 ♂, Donala, 1.xi.1957, H. Knorr.

Distribution.— Central Africa.

Leptocoris hexophthalma hexophthalma (Thunberg, 1784)

Material.— **Cameroon:** 1 ♂, 1 ♀, Sanaga, 2.iii.1958, H. Knorr; **Kenya:** 1 ♂, 2 ♀♀, Ngong Forest, 2000 m, 10.vii.1936, E. le Moul; 1 ♀, Chenangnai, 22.v.1949, Rawlins.

Distribution.— Central to South Africa.

Leptocoris mutilata (Gerstaecker, 1873)

Material.— **South Africa:** 1 ♀, Johannesburg, xii.1960, P.H. van Doesburg, Sr.

Distribution.— Central to South Africa.

Leptocoris nigrofasciata (Distant, 1914)

Material.— **Congo:** 2 ♀♀, Fort Crampel, E. le Moul.

Distribution.— Central Africa.

Leptocoris paramicta Göllner-Scheiding, 1980

Material.— **Kenya:** 1 ♂, 1 ♀, Tinderet I., 16.vi.1949, R.A. Maas Geesteranus.

Distribution.— East and Central Africa.

References

- Göllner-Scheiding, U., 1980. Revision der afrikanischen Arten sowie Bemerkungen zu weiteren Arten der Gattungen *Leptocoris* Hahn, 1833, und *Boisea* Kirkaldy, 1910. — Dtsch. ent. Z., N.F. 27 (1-3): 103-148, figs. 1-54.
- Göllner-Scheiding, U., 1983. General-Katalog der Familie Rhopalidae (Heteroptera). — Mitt. zool. Mus. Berlin 59 (1): 37-189.
- Gross, G.F., 1960. A revision of the genus *Leptocoris* Hahn (Heteroptera: Coreidae: Rhopalinae) from the Indo-Pacific- and Australian regions. — Rec. S. austr. Mus. 13 (4): 403-451, figs. 1-4.

Received: 4.ii.1992

Accepted: 17.ii.1992

Edited: C. van Achterberg